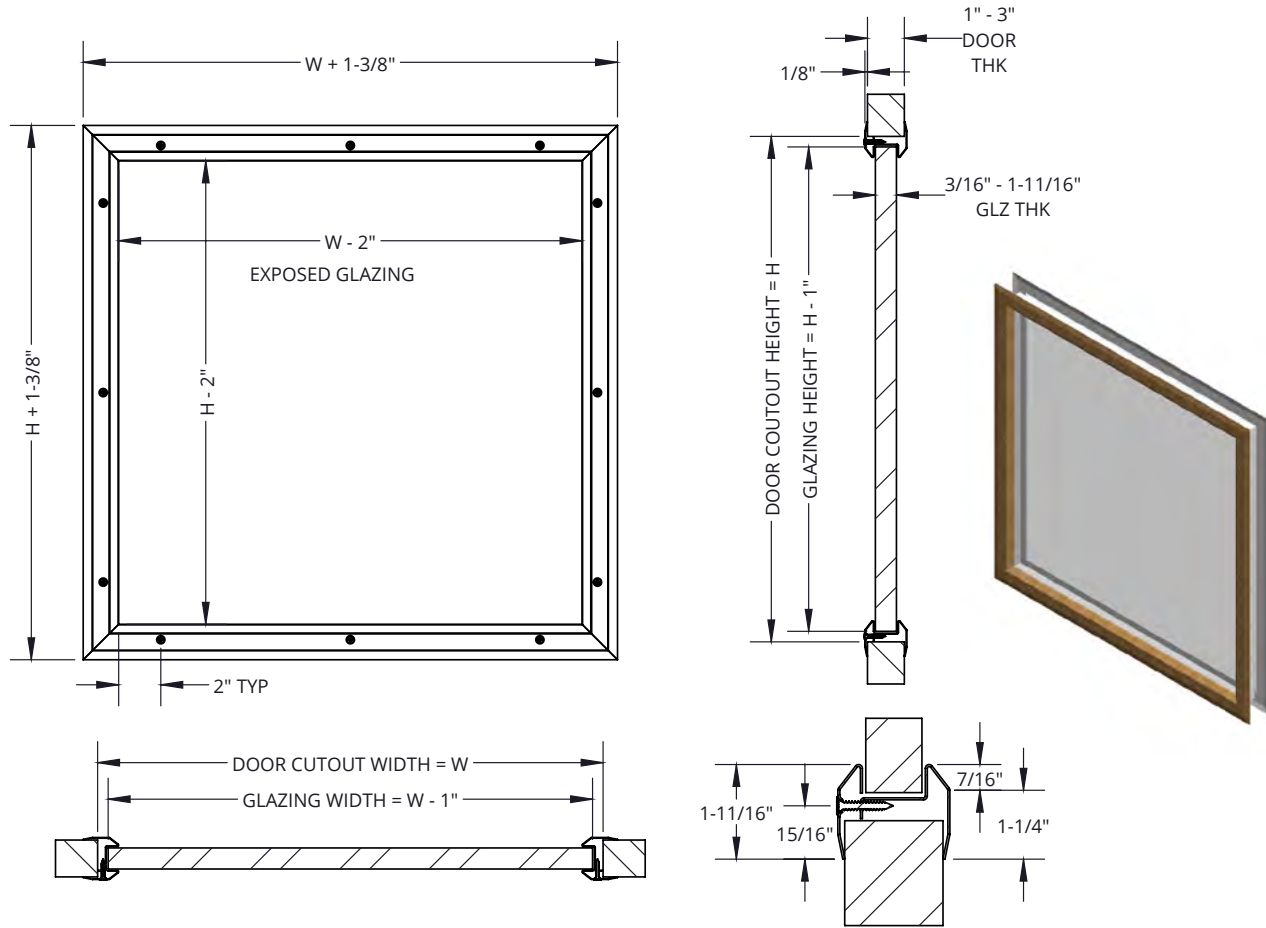


UP TO 3 HOURS

VISION LITE - SLIMLINE™ WOODLITE FOR IGU'S - VWLIG

Low profile Slimline™ Woodlite vision lites mount flush to the door providing a clean aesthetic look. Woodlites™ include a beautiful wood veneer finish. VWLIG models are for non-standard door and glazing thicknesses.



SPECIFICATIONS:

Application:

For standard door thickness 1-3/4" and non-standard glazing thickness 3/8" to 1-11/16".
 For non-standard door thickness 1" - 3" and glazing thickness 3/16" - 1-11/16".
 Must specify both on Made-to-Order table.
 For standard door thickness of 1-3/4" and standard glazing thickness of 3/16" - 5/16" see VWLH

Frame Material: 20 gauge cold rolled steel

Standard Finish: Gray powder coat with .010 wood veneer, select from standard options

Fasteners: #8 x 1" Flathead Phillips screws with wood veneer plugs

Size:

Minimum: 4" x 4"

Maximum: Maximum size fire-rating is determined by glass listing (for doors) and door manufacturer's listing
 Door Cutout = Order Size (W x H)

Glazing Size = Order Size minus 1" (W - 1" x H - 1")

Exposed Glazing = Order Size minus 2" (W - 2" x H - 2")

Protrusion: For glazing thickness that is within 3/4" of the door thickness or thicker, frame will not be flush. Protrusion ranges from .11-.84. See example chart on page 2.

FIRE RATINGS:

UL listed and labeled/stamped to ANSI/UL 10B, ANSI/UL 10C and CAN/ULC S104 when properly installed in rated and approved door. Ratings up to 180 minutes can be achieved depending on exposed glazing size and area.

OPTIONS:

PAks: Vision lite, glazing & glazing tape combined

Compatible Air Louvers Glazing:

Fire-Rated: PPF, FL, FLP, FGL, WS, PPL

Non-Rated: TEMP, ARM 1, ARM2, ARM3, BRG1

Other: Torx screws


TAPE WHEN SOLD SEPARATELY

Qty	Model	Description Dimensions
	GTAPE 200B	Standard glazing tape 1/16" 1/16" thick x 3/8" wide x 200 ft
	FGS3000S90	Intumescent tape for wired glass 5/64" thick x 7/16" wide x 16 ft

Refer to glazing tape submittal for more information

Interpretation of fire and building codes may vary.

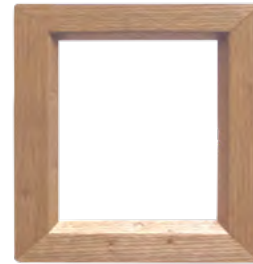
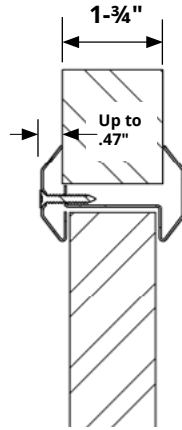
Consult with the local authority having jurisdiction (AHJ) to determine appropriate standards.

 <p>AIR LOUVERS</p> <p>9702 Newton Ave S. Bloomington, MN 55431 Many Locations Nationwide</p> <p>800-554-6077 sales@activarcpg.com www.activarcpg.com</p>	Distributor:		Project:	
	Contractor:		Approved By:	
	Date:		Architect:	
	Scale: N/A	Pages: 1 of 2		Item #:

© 2025 Activar Construction Products Group, Inc. THE INFORMATION CONTAINED IN THIS DRAWING IS THE SOLE PROPERTY OF ACTIVAR CONSTRUCTION PRODUCTS GROUP, INC. ANY REPRODUCTION IN PART OR AS A WHOLE WITHOUT THE WRITTEN PERMISSION OF ACTIVAR CONSTRUCTION PRODUCTS GROUP, INC. IS PROHIBITED. 9-18-2025

Protrusion

DOOR THICKNESS	GLAZING THICKNESS	GLAZING AVAILABLE	PROTRUSION
1"	1/2"	LAMI, INSU	.25
	5/8"	INSU	.31
	1"	INSU	.5
	1-3/16"	BRG1	.59
	1-5/16"	ARM3	.65
	1-1/2"	--	.75
1-3/4"	1-11/16"	--	.84
	1-3/16"	BRG1	.22
	1-5/16"	ARM3	.28
	1-1/2"	--	.37
	1-11/16"	--	.47



VWLIG 1212ROR 01

MADE-TO-ORDER SLIMLINE™ VISION LITE FOR IGUS - EXAMPLE: VWLIG 3236WB 01

QTY	MODEL	WIDTH	HEIGHT	WOOD VENEER OPTIONS	GLAZING THICKNESS*	DOOR THICKNESS	PAK GLAZING OPTIONS	OPTIONS																																																																		
	VWLIG			<table border="1"> <tr><td>MA</td><td>White Maple</td></tr> <tr><td>WB</td><td>White Birch</td></tr> <tr><td>CH</td><td>Cherry</td></tr> <tr><td>VG</td><td>Fir Vertical Grain</td></tr> <tr><td>RO</td><td>Red Oak)</td></tr> <tr><td>ROR</td><td>Red Oak Rift</td></tr> <tr><td>WN</td><td>Walnut</td></tr> <tr><td>MAR</td><td>Mahogany African Ribbon Striped</td></tr> </table>	MA	White Maple	WB	White Birch	CH	Cherry	VG	Fir Vertical Grain	RO	Red Oak)	ROR	Red Oak Rift	WN	Walnut	MAR	Mahogany African Ribbon Striped	<table border="1"> <tr><td>516</td><td>5/16"</td></tr> <tr><td>38</td><td>3/8"</td></tr> <tr><td>12</td><td>1/2"</td></tr> <tr><td>01</td><td>1"</td></tr> <tr><td colspan="2">Other Specify size:</td></tr> </table>	516	5/16"	38	3/8"	12	1/2"	01	1"	Other Specify size:		<table border="1"> <tr><td>1-3/4"</td><td>Std.</td></tr> <tr><td>0138D</td><td>1-3/8"</td></tr> <tr><td>01D</td><td>1"</td></tr> <tr><td>02D</td><td>2"</td></tr> <tr><td colspan="2">Other Specify size:</td></tr> </table>	1-3/4"	Std.	0138D	1-3/8"	01D	1"	02D	2"	Other Specify size:		<table border="1"> <tr><td colspan="2">None</td></tr> <tr><td>FL PAK</td><td>3/16" Firelite NT</td></tr> <tr><td>PPF PAK</td><td>3/16" Pyran Platinum F</td></tr> <tr><td>FGL PAK</td><td>1/4" Fireglass 20</td></tr> <tr><td>TEMP PAK</td><td>1/4" Non-Rated Tempered</td></tr> <tr><td>WS PAK</td><td>1/4" WireShield</td></tr> <tr><td>FLP PAK</td><td>5/16" Firelite Plus</td></tr> <tr><td>PPL PAK</td><td>3/8" Pyran Platinum L</td></tr> <tr><td>ARM1 PAK</td><td>13/16" ArmrShield 1</td></tr> <tr><td>ARM2 PAK</td><td>1-1/16" ArmrShield 2</td></tr> <tr><td>BRG1 PAK</td><td>1-3/16" BRG 1</td></tr> <tr><td>ARM3 PAK</td><td>1-5/16" ArmrShield 3</td></tr> <tr><td colspan="2">Other PAK - specify below:</td></tr> </table>	None		FL PAK	3/16" Firelite NT	PPF PAK	3/16" Pyran Platinum F	FGL PAK	1/4" Fireglass 20	TEMP PAK	1/4" Non-Rated Tempered	WS PAK	1/4" WireShield	FLP PAK	5/16" Firelite Plus	PPL PAK	3/8" Pyran Platinum L	ARM1 PAK	13/16" ArmrShield 1	ARM2 PAK	1-1/16" ArmrShield 2	BRG1 PAK	1-3/16" BRG 1	ARM3 PAK	1-5/16" ArmrShield 3	Other PAK - specify below:		<table border="1"> <tr><td colspan="2">None</td></tr> <tr><td>-T</td><td>Torx Screw</td></tr> </table>	None		-T	Torx Screw
MA	White Maple																																																																									
WB	White Birch																																																																									
CH	Cherry																																																																									
VG	Fir Vertical Grain																																																																									
RO	Red Oak)																																																																									
ROR	Red Oak Rift																																																																									
WN	Walnut																																																																									
MAR	Mahogany African Ribbon Striped																																																																									
516	5/16"																																																																									
38	3/8"																																																																									
12	1/2"																																																																									
01	1"																																																																									
Other Specify size:																																																																										
1-3/4"	Std.																																																																									
0138D	1-3/8"																																																																									
01D	1"																																																																									
02D	2"																																																																									
Other Specify size:																																																																										
None																																																																										
FL PAK	3/16" Firelite NT																																																																									
PPF PAK	3/16" Pyran Platinum F																																																																									
FGL PAK	1/4" Fireglass 20																																																																									
TEMP PAK	1/4" Non-Rated Tempered																																																																									
WS PAK	1/4" WireShield																																																																									
FLP PAK	5/16" Firelite Plus																																																																									
PPL PAK	3/8" Pyran Platinum L																																																																									
ARM1 PAK	13/16" ArmrShield 1																																																																									
ARM2 PAK	1-1/16" ArmrShield 2																																																																									
BRG1 PAK	1-3/16" BRG 1																																																																									
ARM3 PAK	1-5/16" ArmrShield 3																																																																									
Other PAK - specify below:																																																																										
None																																																																										
-T	Torx Screw																																																																									

It is the responsibility of the customer to communicate specifications and product performance requirements that are needed for their application. This document is intended to convey potential product configurations and offerings. It is not to be used to imply or represent a specification or rating, of finished products shipped. Detailed, specific submittals can be created upon request. It is the responsibility of the customer to specify product accordingly to comply with local laws, codes, and ordinances.